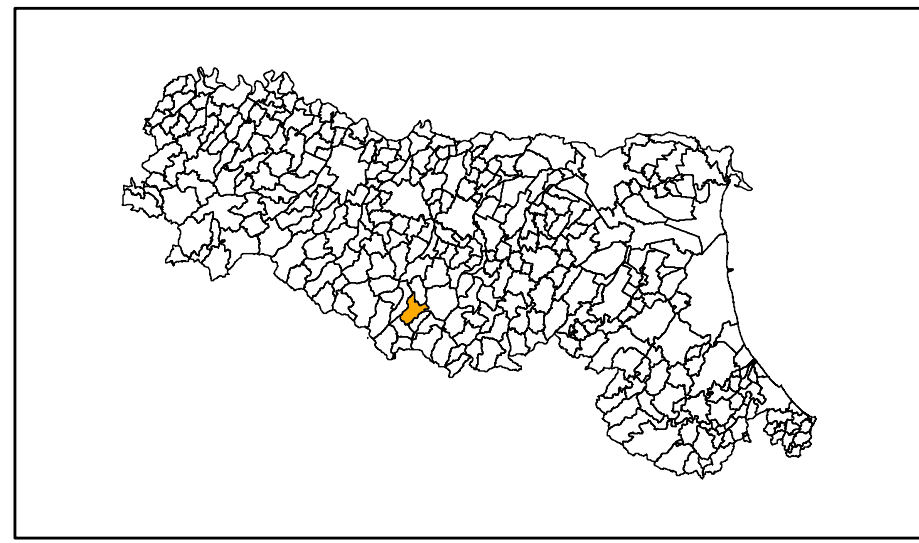


MICROZONAZIONE SISMICA

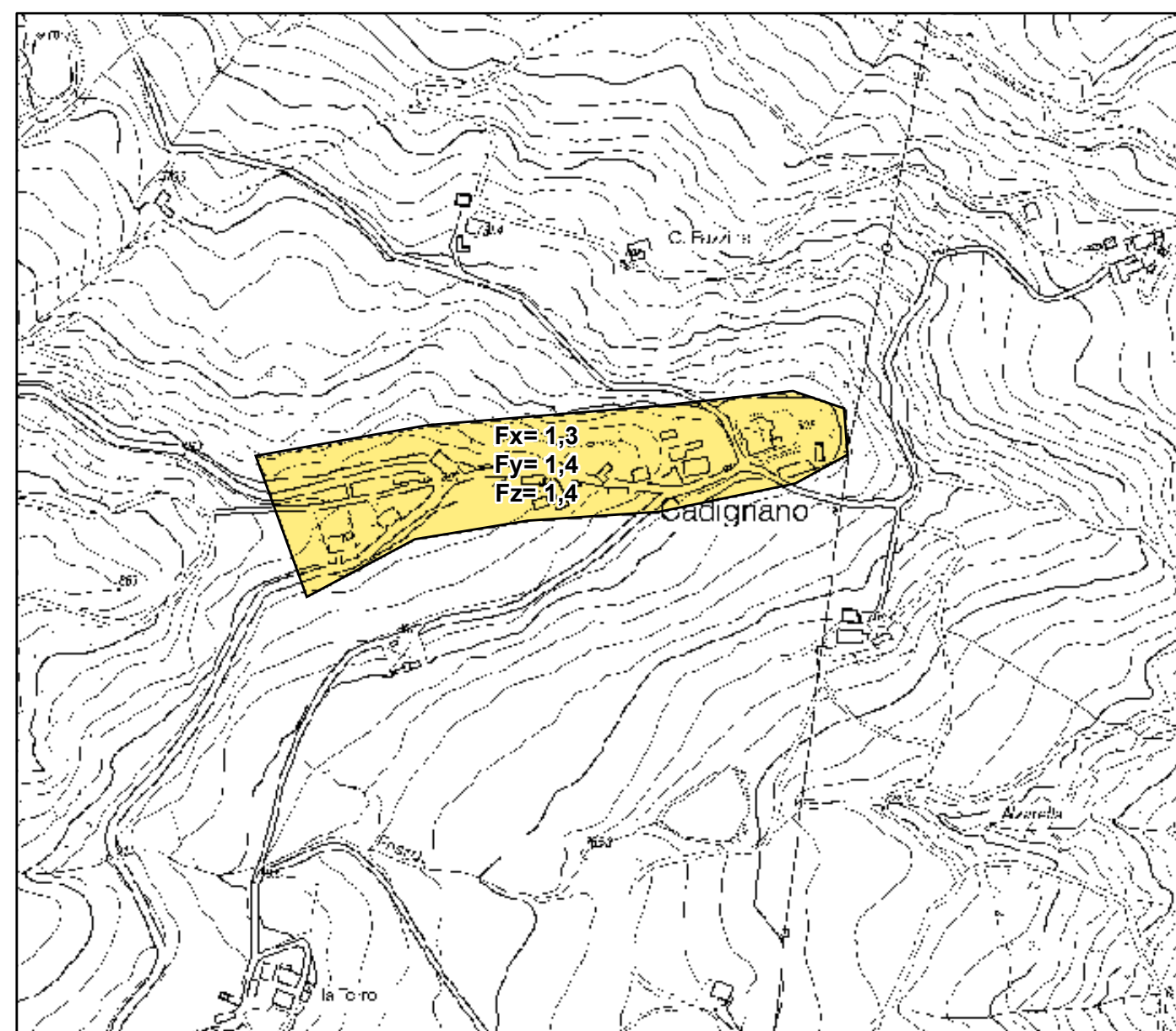
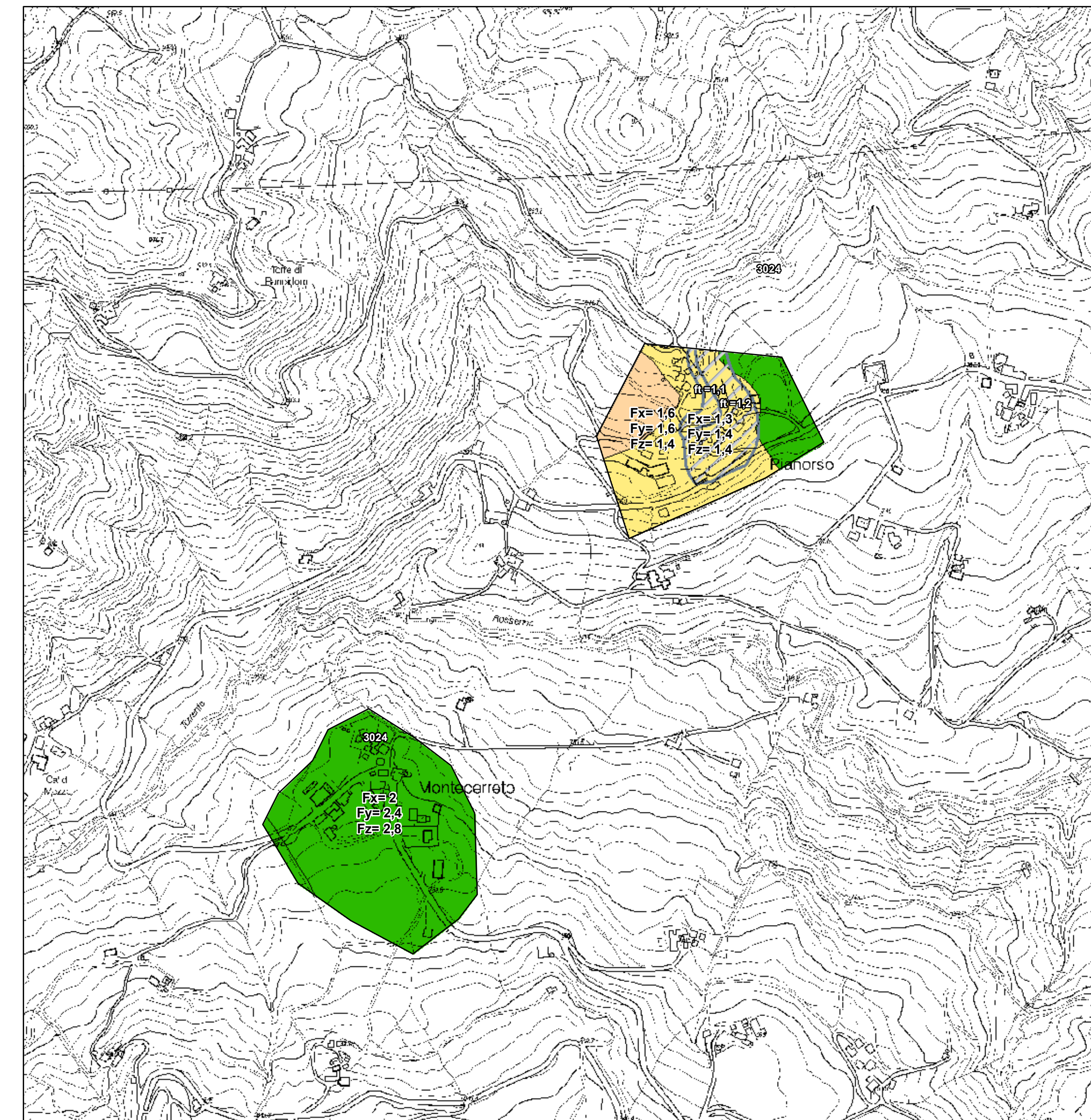
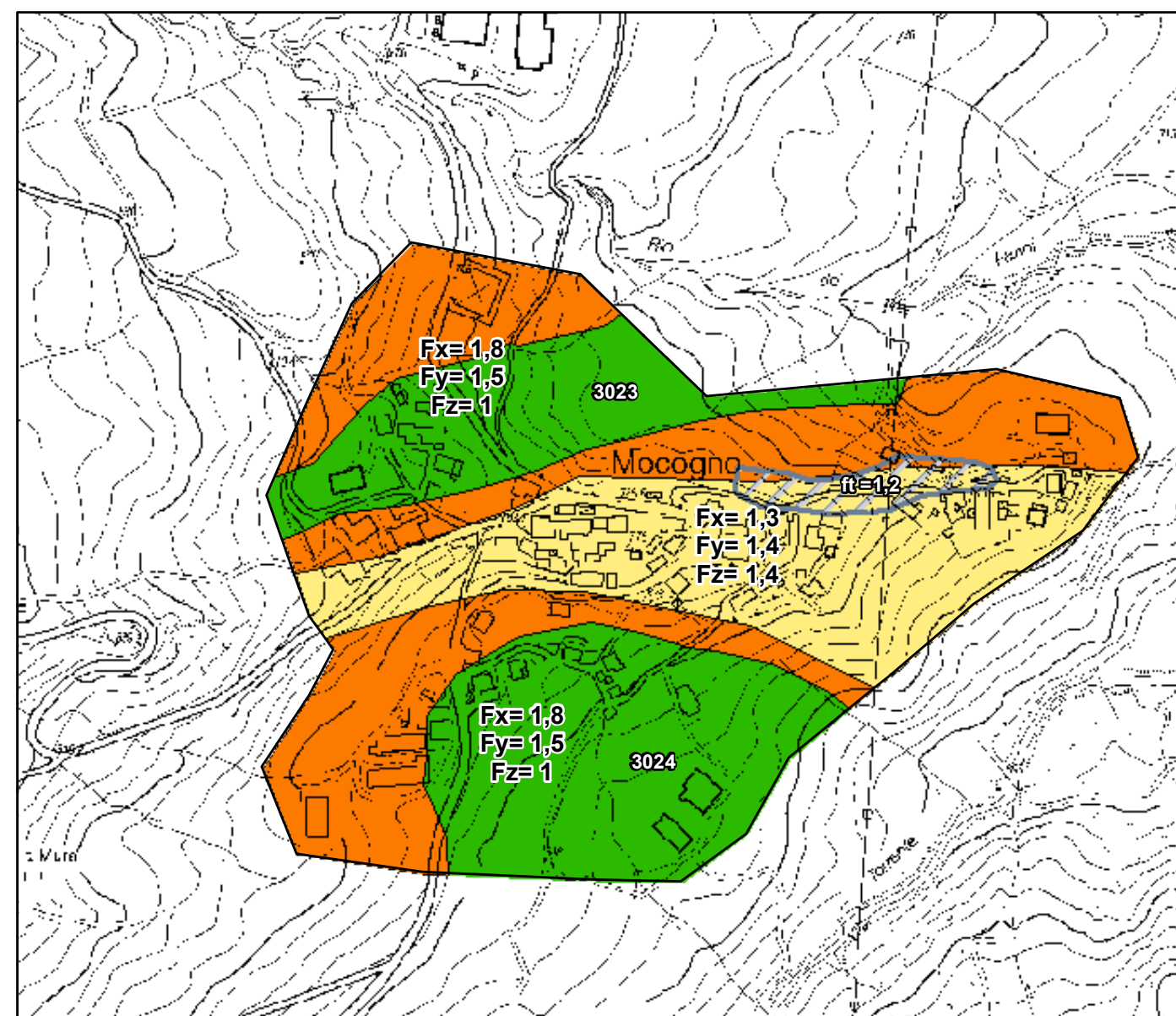
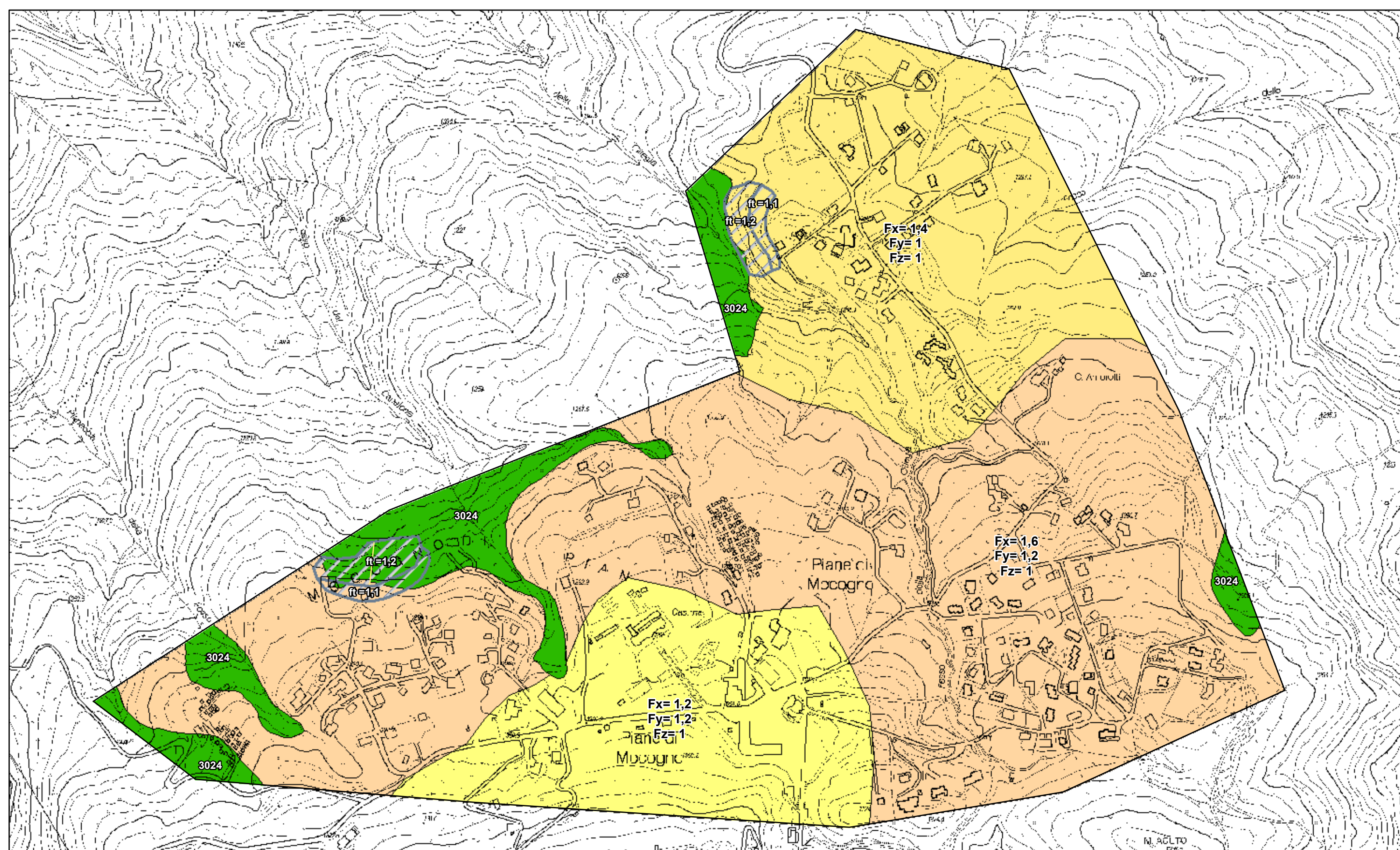
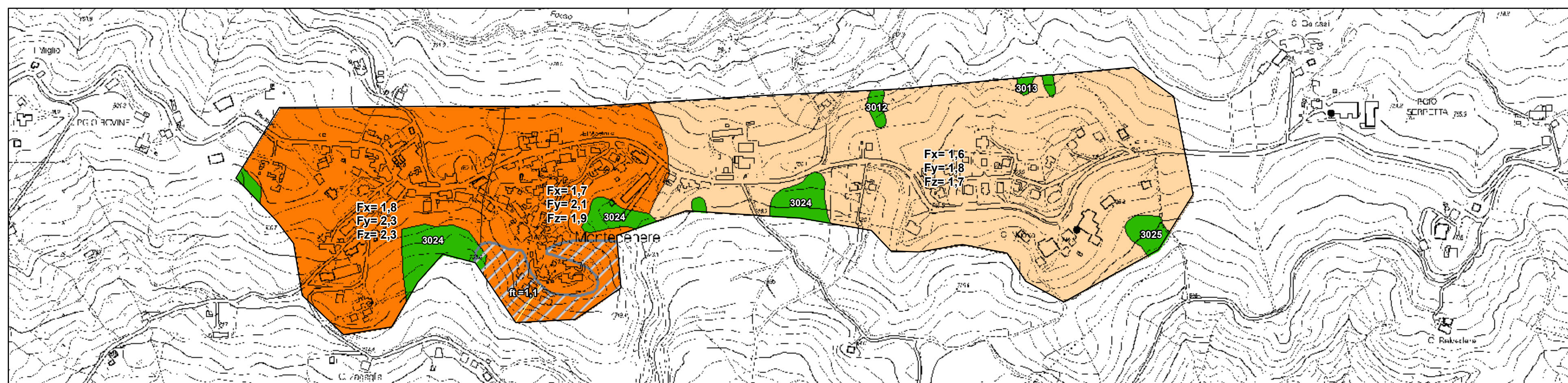
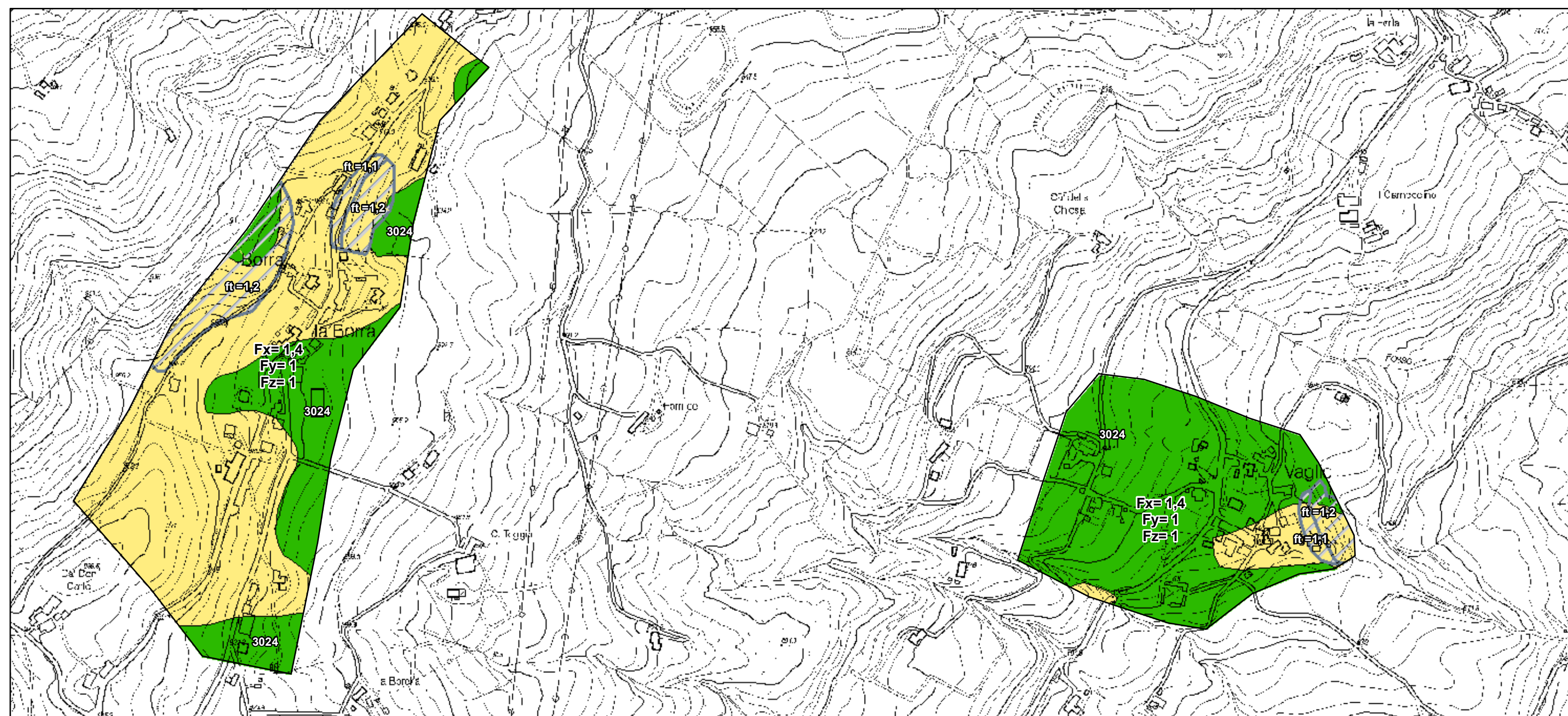
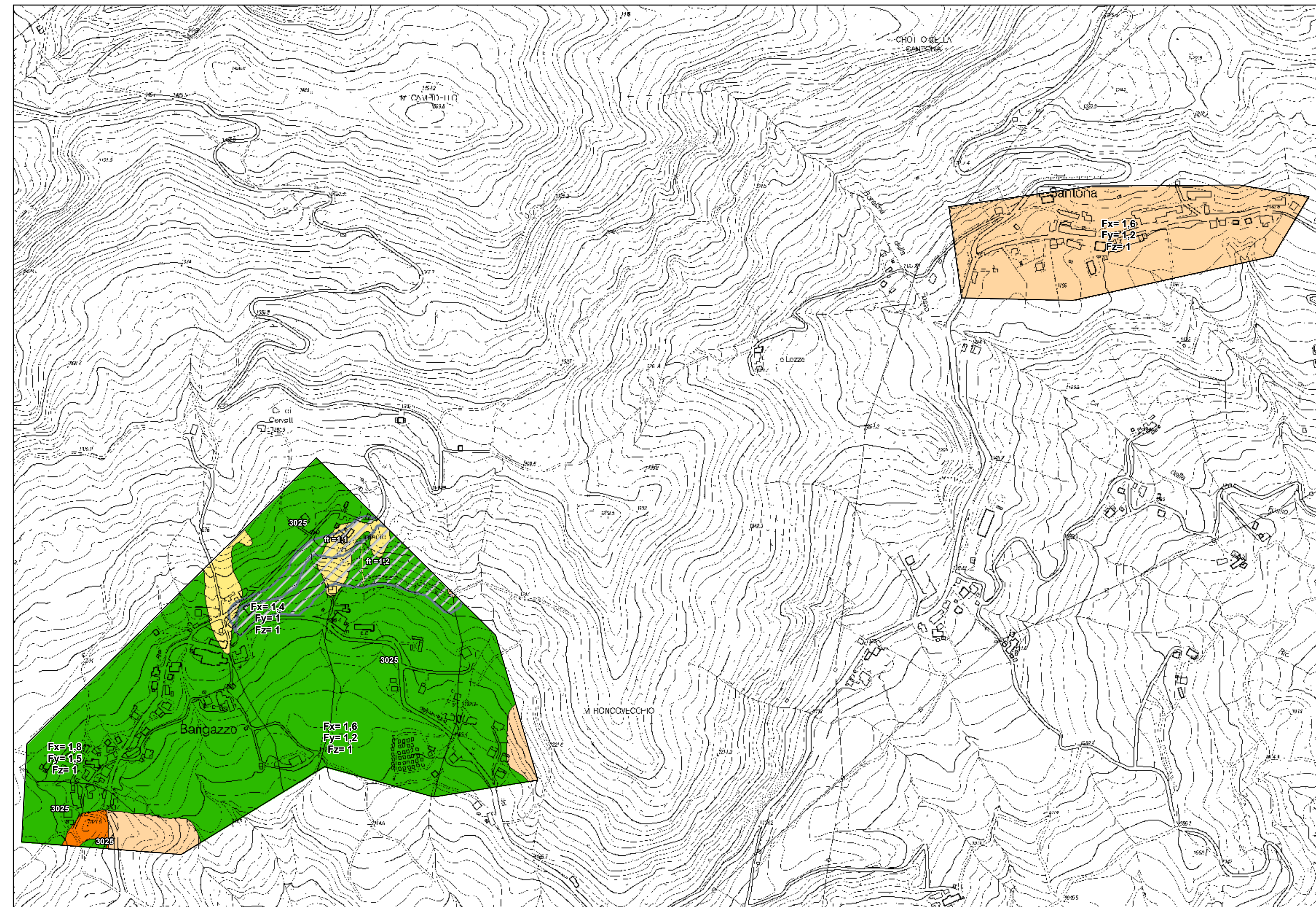
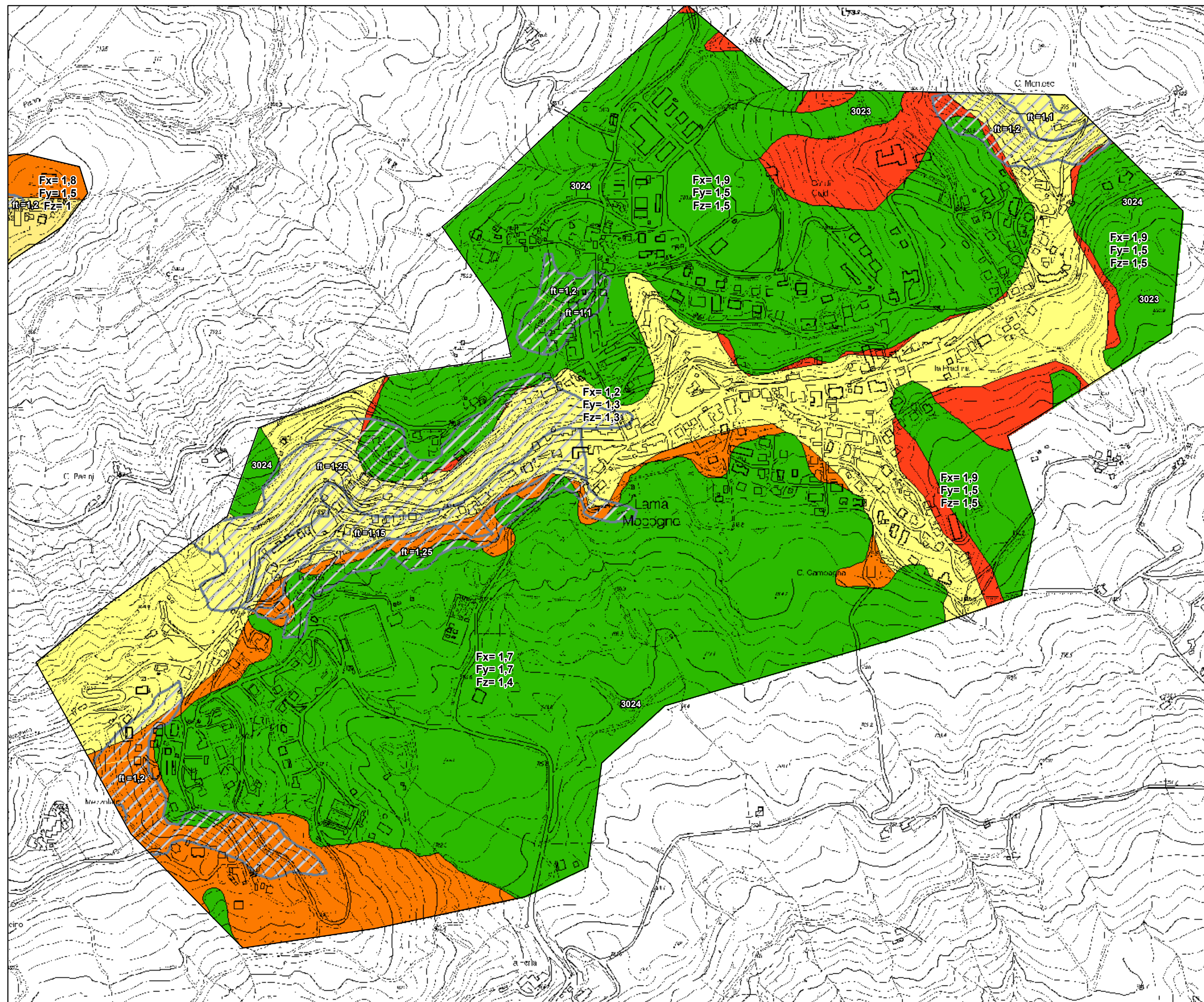
Carta di microzonazione sismica Livello 2 - FPGA

scala 1:10.000

Regione Emilia-Romagna
Comune di Lama Mocogno



Regione	Soggetto realizzatore	Data
Emilia Romagna	Studio Geologia Tecnica Dott. Geol. Lorenzo Del Maschio	Ottobre 2013



Legenda

- Zone stabili
- Zone suscettibili di instabilità
 - Instabilità di versante
- Zone stabili suscettibili di amplificazioni locali
 - F_x = 1.1 - 1.2
 - F_x = 1.3 - 1.4
 - F_x = 1.5 - 1.6
 - F_x = 1.7 - 1.8
 - F_x = 1.9 - 2.0
 - F_x = 2.1 - 2.2
 - F_x = 2.3 - 2.4
 - F_x > 2.5
- Traccia per gli approfondimenti delle amplificazioni topografiche
- Area di amplificazione topografica

